

A Daycare Center Full Of Energy

Following The Reformation Of
The Child Care Support System

Daycare Center Use Guide

For
Parents



경기과학기술대학교 산학협력단 위탁운영
시흥시육아종합지원센터



Understand Extended Childcare

1. What is Extended Childcare and how is it used?
2. What is the procedure for using extended childcare?
3. What do children do during extended childcare hours?
4. How does extended childcare run?

What is an electronic attendance and absence checking system?

1. What parents like about it.
2. How it works.

When you use daycare center, please keep it in mind!

Understand Basic Child Daycare

1. What is basic child daycare and how does it work?
2. How are our children doing in the daycare center during the basic childcare hours?

With the reorganization of the childcare support system, Childcare services at daycare centers are renewed.

The use of Daycare Centers,
is on the mind of parents



The teacher who works late seems to be very tired.

One day, I went back to the daycare center late to pick up items I left there and saw the homeroom teacher was taking care of the children until then. She looked tired even during the day, but after taking care of them all day, I'm worried that she might be exhausted.



My child is always the last one at the daycare center, so I'm worried.

Whenever I go to daycare centers, even diligently after work, it's always past 7 p.m.

My child is only one left every day, so I'm afraid he/she is being left unattended. I'm also sorry that the teacher is working late because of my child.

This is how Day Care Center changes.



Basic
Childcare



Extended
Childcare

The daycare center is now operated separately from the basic childcare (9 a.m. to 4 p.m.) and is applied to infants who need additional care (4 p.m. to 7:30 p.m.). A separate teacher will be assigned during extended childcare hours.

Understand **Extended Childcare**

1. What is Extended Childcare and how is it used?

What is Extended Childcare?

Extended Childcare is intended for infants&babies who have applied for its use in advance, and means extra childcare from 4 p.m. to 7:30 p.m. after basic childcare hours.

This refers to childcare performed by a dedicated teacher in an extended class consisting of infants or babies who applied for extended childcare, rather than maintaining a basic childcare class organized by age.

What is the time for extended childcare?

It is from 4 p.m. to 7:30 p.m.(16:00 to 19:30) after basic childcare hours.

Who can use extended childcare?

Infants and babies who applied for extended childcare use in advance are eligible.

If infants go past 17 o'clock (at least 10 hours a month) and meet the eligibility criteria for extended childcare (0-2 years of age), they can apply according to the procedure.

However, please consult with the director of the daycare center before applying for extended childcare.

★ Even if you didn't apply for extended childcare, you might use it after applying by words, phone.

For example, if he/she goes home after 17 o'clock occasionally, or it is an emergency.



Questions? >>

Q I didn't apply for extended childcare, but what should I do if I have to take my child home after 5 p.m. due to sudden circumstances?

A You can apply for intermittent or emergency extended childcare.
Intermittent and emergency extended childcare is for situations where infants and babies fail to apply for extended childcare but have to stay after 17 o'clock due to sudden circumstances. Extended childcare is provided within the permitted scope of extended childcare. If intermittent or emergency extended childcare is required, the day before or until the morning of the day, you must apply in advance.

If you use extended childcare, please **remember!**

- ✓ Please apply for extended childcare only those who use it at least 10 hours a month and going home after 5 p.m. (17 p.m.).
- ✓ The daycare center employs special teachers according to the children who use extended classes, so if it is not regularly, please refrain from applying for extended childcare.
- ✓ Even infants and babies who applied for extended childcare, cannot come back after leaving the daycare center, because of attending the institution (excluding those that left to visit the hospital).
- ✓ When you leave from extended childcare, the guardian should help him/her gather their things (packing up belongings, wearing shoes, etc.).
- ✓ Please allow infants and babies who only use basic childcare to leave before or at 4 p.m. and infants and babies who use extended childcare to stay until 7:30 p.m.

Understand **Extended Childcare**

2. What is the procedure for using extended childcare?

01 Consultation on the use of extended childcare (director ↔ parents)

Consult with the director of the daycare center about whether to use extended childcare (e.g. time to use extended childcare).

- ★ Please apply for extended childcare for only those who use it at least 10 hours a month and going home after 5 p.m.
- ★ Even if you didn't apply for extended childcare, you may use it by applying with words or a phone call only if it is on occasion or an emergency.

02 Application for extended childcare qualification (0–2 years old class)

The application for extended childcare is conducted at the Public Administration and Welfare Center (Eup–Myeon Office, Dong Community Center) or Welfare Center (www.bokjiro.go.kr).

- ★ By Determination and notification of eligibility for extended childcare : City, County(Gun), and Gu

Qualification criteria for extended childcare

- ▶ The 0–2–year–old class, the infant must meet the ‘qualification’ that requires long–term care.

Employment	Wage workers, self-employed/special types of workers (short term workers, 15 hours a week, less than 60 hours a month), farmers and fishermen, artists, and unpaid family workers
	Employed/employment preparation (using the institution, only once a year, once a year), civil servants, public institutions, and private companies, appointment tests or submit a receipt for the national qualification test under the "Credit Standards Act"
Household	Multilateral (over two-child households), single-parent families, grandparents caring families, multicultural families, low-income families
Disability/Health	Disability, long-term care / a special case, hospitalization / nursing
Pregnancy/Delivery	Pregnancy, childbirth, miscarriage
Academic studies	Attendance (approval of a remote university), degree course (recognition of a thesis period, limited to once a year)
Long-term absence	Military service, Servitude

- ★ Infants that attend all day are automatically converted to extended child care, so no reapplying is required. In the case of pre-tailored infants, they should apply for extended childcare status if desired.

- ▶ Children, age 3–5(class) who use consultation at the daycare center can come without any qualification criteria.

03 Application for extended childcare use (0–5 years)

- If extended childcare is decided to be used, the application for extended child care should be submitted to the daycare center and filled out.
 - Submit 'Application for the use of extended childcare' to the daycare center (all of 0 ~ 5 years old (class) who use extended childcare).

04 The use of extended childcare will be finalized.

3. What do children do during extended childcare hours?

◈ **In extended childcare, infants live by playing voluntary games.**

Extended childcare is an extension of the standard childcare (Nu-ri) process, and provides voluntary activities for infants so that they can enjoy their daily lives and feel comfortable. The extended classroom is equipped with age-appropriate teaching aids and provides a stable environment where students can enjoy their lives until leaving school.

◈ **In extended childcare, infants feel stable through 'Rest'.**

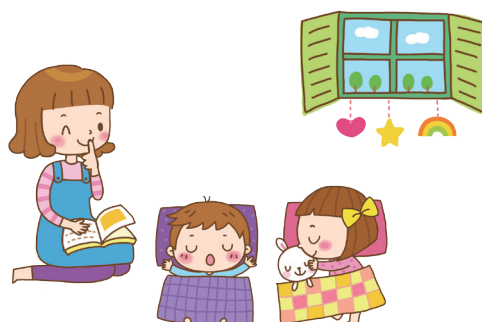
The extended childcare program is operated as a more flexible daily routine for infants who are exhausted due to long-term child care at daycare centers to fully rest and play. As they live with the 'home teacher' in a separate 'Extraordinary Class', teachers help them feel stable by taking care of their need to feel anxious or tired until late in the afternoon.



Understand **Extended Childcare**

4. How does extended childcare run?

- Infants & babies who apply for extended childcare will be moved to the extended class after 4 p.m. and childcare will be performed by the extended class home teacher.
- It opens from 4p.m. to 7:30p.m.
- The extended classes are divided into infant and baby classes, then operated.
[Teacher-to-Child Ratio] **Infant class 1:5, babies class 1:15**
 - When a class has a child under the 0-year-old child or a disabled child, the ratio is 1:3. The infant class has 0 years old infants included, so the possible ratio is 1:15. (only one class per childcare center)
 - Elastic childcare is allowed for up to 2 children for infant class and 5 children for baby class.
- The extended childcare program is carried out with free play for infants and daily life (including rest).
 - ★ The cost of extended childcare does not include the cost of school meals and snacks, and there is no obligation to provide it to daycare centers during extended childcare hours. If it is needed, the daycare center and parents will decide through consultation, and in this case, the parents will pay for the meal.



Questions? >>

- Q** Is it possible to go to the institution and come back during the extended class?
- A** It is impossible to go to private institutes and come back except in the case of hospital care and rehabilitation because otherwise, it hinders the safety and child care environment of extended children, and it is desirable to have them leave school at 4 p.m. (16 p.m.) in time for basic childcare when using outside educational institutions.
- Q** Are there any special activities during extended childcare?
- A** During extended childcare, there are no special activities because the program focuses on play and rest to stabilize the emotions of infants and children after staying in the institution for a long period of time.

What is an electronic attendance and absence checking system?

What is an electronic attendance and absence checking system?

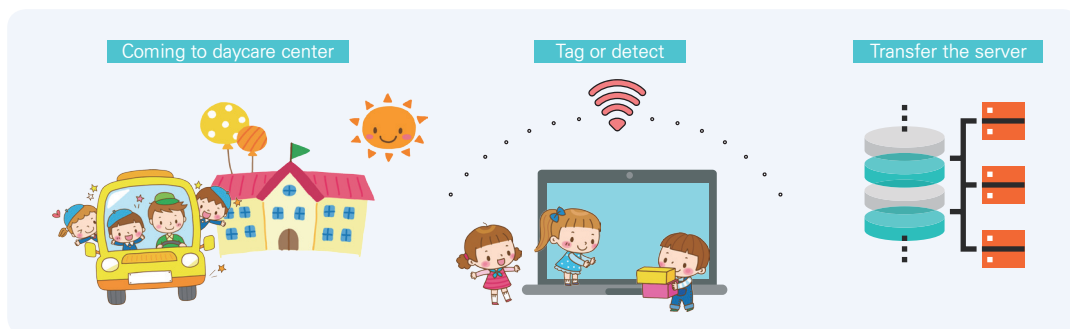
This system automatically checks the information of children's coming & going and manage electronically.

1. What parents like about it.

- Parents can use the Child Daycare Center with their hearts at ease by receiving children's coming & going information.
- Daycare centers will reduce administrative tasks such as managing attendance documents, checking attendance dates and applying for child care fees.

2. How it works.

- Infants and babies carry on a recognition device (tag) for an automatic check-up for entering and leaving the daycare centers.
 - ★ The government will provide some support (up to 5,000 won) for the recognition device (tag) purchase for infants and babies once a year. However, in case of loss, it is the parents' responsibility to replace it.
- The clock-in and out-of-school visual recorders that are installed in daycare centers track kids and their actions are automatically checked through the server transfer.



- Infants and babies' actions of entering and leaving are sent to the parents by a cell phone text message.

please remember!

Infants and babies must have a recognition device (tag, etc.) to record their coming to school and going from school, so please cooperate and help your child/children enter the daycare center with a recognition device (tag, etc.).

When you use daycare center, please keep it in mind!

⬢ Be sure to pick up your child on time.

Regular drop off and pick up is a very important factor to infants & babies' stability during their daycare center life. Remember this so that your children can adapt to daycare life well and enjoy staying here. Please pick up infants & babies who use only basic childcare at 4 p.m. and who use extended childcare at 7:30 p.m.

⬢ When applying for extended childcare, think carefully about whether you need it!

If you need to use daycare for more than 10 hours per month after 5 p.m., then apply for extended childcare. The daycare center assigns 'extension class' and 'extension care teacher' according to the application for extended childcare. If the extended class fails to meet the required personnel numbers and hours of use for more than two months, the teacher's pay support will be stopped. Since extended childcare can be stable only when the number of children is maintained continuously, please consider whether extended childcare is really necessary and if not, do not apply.

⬢ If you need extended childcare due to sudden circumstances, please let us know in advance!

Even infants and babies who do not apply for extended childcare can apply for it if there is an urgent reason. If he/she has a reason to leave after 5 p.m. and should be needing "extended childcare", the homeroom teacher should be notified by that morning at the latest to ensure stable extended childcare.

⬢ You can not come back after leaving.

It is impossible to go to private institutes and come back except for inevitable hospital care.

⬢ Talk to your homeroom teacher about the infant's and babies' daycare center life.

When using extended classes, the homeroom teacher in charge of extended classes and not the usual homeroom teacher, will instruct you when to leave school, so if you have any questions within the basic childcare hours, please consult with the basic childcare homeroom teacher using "Daycare Note," "Note of Smart Alert", or "by Phone."

★ Consult with extended homeroom teacher during extended childcare hours.



Understand **Basic Child Daycare**

1. What is basic child daycare and how does it work?

What is basic childcare?

It is childcare service until 4 p.m. after school and uses the same methods as usual.

When is basic childcare?

From 9:00 a.m. to 4:00 p.m. (09:00 to 16:00).

★ However, times between 07:30~09:00 can be registered sequentially, and it is operated as an integrated childcare service.

Who uses basic childcare?

Basic childcare is available to any infant who uses daycare center.

★ All infants, regardless of age, are eligible for basic childcare because all-day classes and customized-class are abolished.

How does basic childcare run?

The homeroom teacher takes care of them in the class that is already deployed.

★ The homeroom teacher's regular infant care time is from 9 a.m. to 4 p.m.

★ Considering the sequential commuting time, basic childcare (9 a.m. to 4 p.m.) is operated in the form of an integrated class. However, after 4 p.m., only children who apply for extended childcare will be taken care of by an extended childcare teacher at extension class.

07:30	09:00	16:00	17:00	19:30
Coming	Basic childcare (play, school meals, snacks, activities, naps, etc)		Extended childcare	



Please remember!

- ✓ Regular drop off & pick up allows kids to predict the life of daycare center and helps them live a stable life.
- ✓ Children's educational experiences are fully achieved by using basic childcare at daycare center. Day-to-day childcare programs at daycare center is focused on basic childcare, which runs from 9 a.m. to 4 p.m., is enough educational experience and social experience with peers.

Understand *Basic Child Daycare*

2. How are our children doing in the daycare center during the basic childcare hours?

What is basic daycare?

This means that all infants and babies who use daycare centers are cared for by their homeroom teachers during the same child care period from 9 a.m. to 4 p.m. during basic childcare hour. Infants and babies grow up by experiencing play and daily life with teachers and friends based on standard childcare under child & play-oriented Nuri programs.

◉ Infants and babies grow up through playing, activities, and experiencing daily life.

Infants live by playing, performing activities, and experiencing daily life according to their level of development and interest based on standard childcare (Nuri programs) at daycare centers. Through the play-oriented child care process, infants grow up to be healthy children, experiencing "daily life" such as eating, taking a nap, washing hands, and pooping.

◉ Infants feel secure when repeating their daily routines.

The daycare center's daily routine consists of "coming to school – morning snack – indoor(outdoor) free play – outside play – lunch – nap&rest – afternoon snack – indoor(outdoor)free play – leaving the school." Infants and children experience a sense of emotional stability through repeated experiences of a set day by day. The daily routine of daycare centers can be changed considering the age, interest, and health of infants and babies, but the use of basic childcare is sufficient for the educational development and growth of infants and babies.



